



42 Aldebury Road, Maidenhead, SL6 7HB
Offers Over £260,000 Leasehold

CHAIN FREE In need of updating, a two double bedroom first floor maisonette providing generous living accommodation together with a garden and garage in a block, conveniently positioned for local schools, shops and Elizabeth Line Station.

Covered Entrance Area

Covered entrance area, bin storage.

Ground Floor Lobby

Private entrance lobby with stairs to the first floor landing, entryphone system.

First Floor Landing

Access hatch, storage cupboard.

Double Bedroom**Double Bedroom**

Built in double wardrobe

Sitting/Dining room

Brick fireplace.

Bathroom

WC, panelled bath mixer hand shower, half tiled walls, pedestal wash basin.

Kitchen

Space for fridge, storage cupboard , work surfaces incorporating inset stainless steel sink.

Garage

Garage in block.

Outside

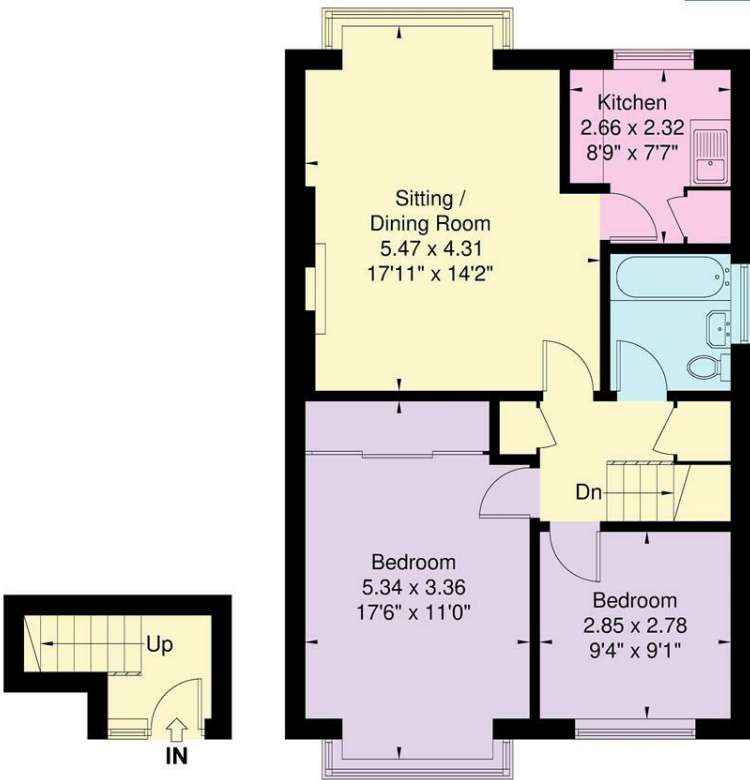
Enclosed secluded garden to the rear.

Floor Plan

Approximate Floor Area = 67.9 sq m / 730 sq ft

Aldebury Road

Waterman
Established 1990

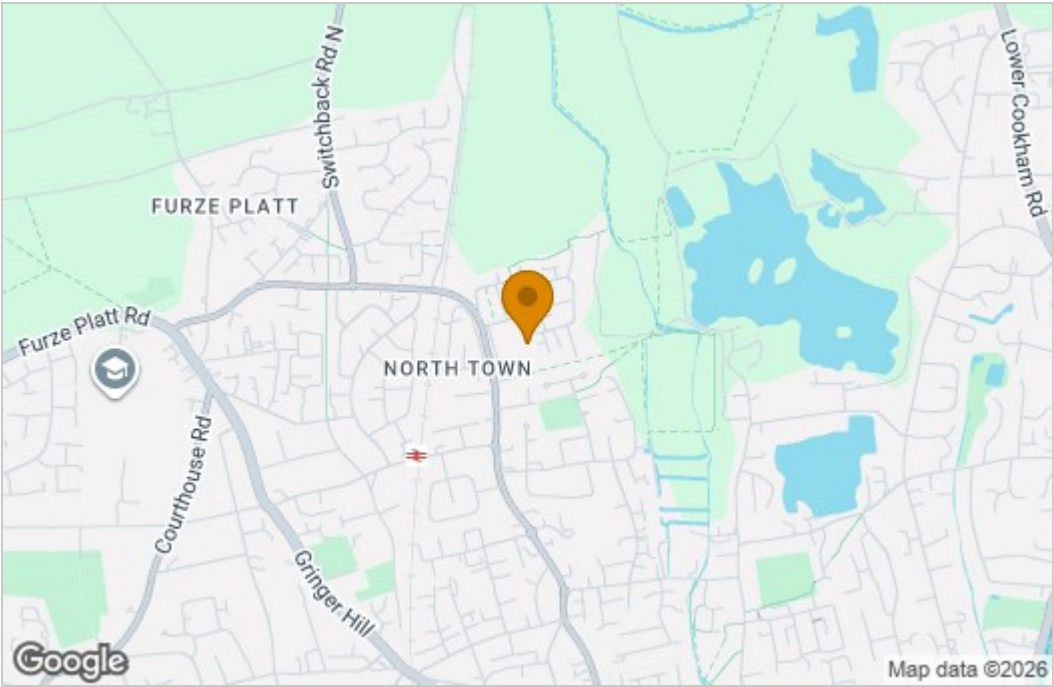


Ground Floor

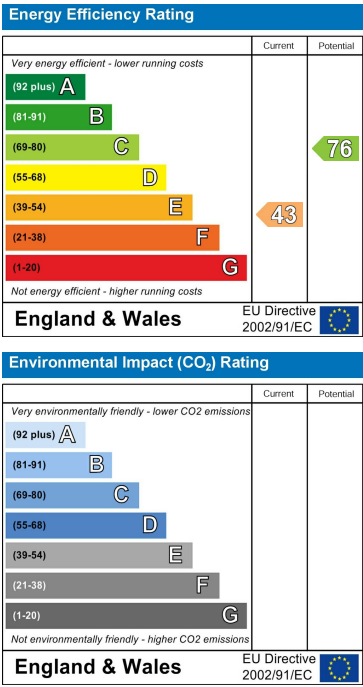
First Floor

Illustration for identification purposes only,
measurements are approximate, not to scale.

Area Map



Energy Efficiency Graph



These particulars, whilst believed to be accurate are set out as a general outline only for guidance and do not constitute any part of an offer or contract. Intending purchasers should not rely on them as statements of representation of fact, but must satisfy themselves by inspection or otherwise as to their accuracy. No person in this firm's employment has the authority to make or give any representation or warranty in respect of the property.